



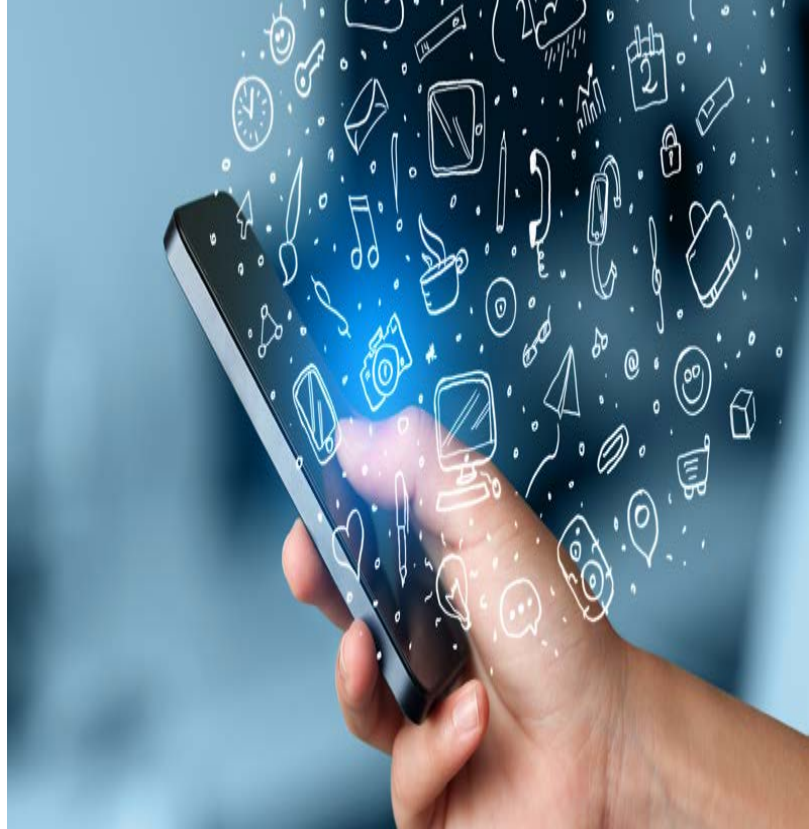
# Future-Proofing Cellular Solutions

**CELLULAR**

GlobalEdge has the wherewithal to develop, enhance, test and integrate the latest Cellular Radio Access technologies. We equip our customers with intelligent tools and solutions that help them stay robust, nimble, and always ahead of the competition with the latest of technologies at their disposal.

### **What Sets Us Apart:**

- Unparalleled expertise in the development, integration, maintenance and testing of the latest Cellular Radio Access Technologies and VoLTE
- A comprehensive suite of offerings to address the entire spectrum of engineering requirements of LTE silicon vendors, communications equipment and network equipment providers
- Deep domain expertise across Cellular, Networking and Cloud that has, over the years, translated into a range of demo-able proof of concepts/prototypes and solutions



### **Our Offerings:**

Our wide range of services and solutions are primarily aimed at enabling seamless convergence - of legacy and new-age; hardware and software; on-premise and on-cloud; and enterprise and consumer.

### **LTE Solutions Maintenance**

- LTE L2/L3 protocols stack maintenance and features enhancements (Small Cell and Cellular Modems)
- LTE Small Cell Software Framework and solution maintenance
- Self-Organizing Networks (SON)
- TR069 and SNMP based Operations and Management (OAM)

## **VoLTE and VoWiFi**

- VoLTE, RCS, VT/ViLTE solutions feature enhancements and sustenance
- Platform migration ( Android and Windows 10)
- Customization specific to carriers/operators

## **Small Cell, Modem Testing and Test Automation**

- LTE Small Cell Testing
  - Small cell system testing, stability, features and performance testing
  - Interoperability testing
- Testing Accelerators
  - LTE small cell test automation framework
  - VoLTE compliance test automation framework
- Cellular Modem (UE) Testing

## **LTE/WCDMA/GERAN Protocols and VoLTE Conformance Testing**

- GCF/PTCRB
- RF conformance testing
- Carrier Acceptance Testing (CAT)
- GPS, A/GPS

## **Cellular M2M and Telematics**

- Device monitoring, control and management (LWM2M, OneM2M)
- M2M Gateway
- Middleware development and enhancements
- System integration of third party modem modules and modem manager
- Cloud Integration
- Carrier Acceptance Testing of M2M modules
- GPS, A-GPS Integration
- Target Applications - Telematics, Connected Cars, Smart Home, Smart Energy, and Smart City

We would love to meet you and understand your business challenges and showcase our capabilities. For a free demo, please contact us at:

**Phone No.** : +91 80 7100 6677

**Email Address** : [sales@globaledgesoft.com](mailto:sales@globaledgesoft.com)

## About GlobalEdge

GlobalEdge is a product engineering company creating intelligence in things for a new connected world. With a vision to be a leading technology company, transforming the embedded world with innovative solutions and services, we are a partner from innovation to implementation. We are focused on designing the behavior of devices using reusable solutions and components and addressing business challenges in Automotive, Consumer Electronics, Industrial Automation and Semiconductor industries through a combination of platform, wireless, connectivity, and cloud solutions. With a wide range of expertise in delivering solutions from 'Chip-to-Cloud', in a world of connected things, we also deliver solutions that are specific to the Internet of Things. Our in-depth experience in platform play, multimedia, connectivity, and cloud solutions makes us a perfect fit as an IoT partner to global enterprises.